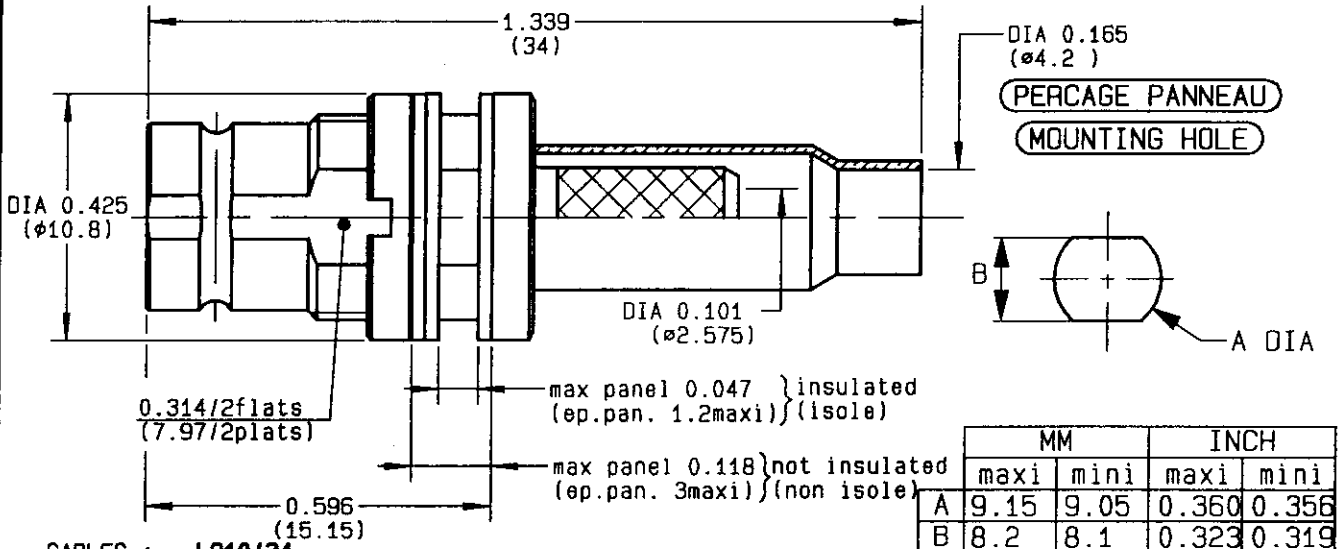


STRAIGHT BULKHEAD CABLE JACK-CRIMP TYPE  
CABLE L910/34



	MM		INCH	
	maxi	mini	maxi	mini
A	9.15	9.05	0.360	0.356
B	8.2	8.1	0.323	0.319

CABLES : L910/34

CHARACTERISTICS

NOMINAL IMPEDANCE	75 Ω
FREQUENCY RANGE	0-1 GHz
TEMPERATURE RATING	-55/+155 °C
VSWR	1.22 + 0 x F(GHz)Maxi
RF INSERTION LOSS	TBD √F(GHz) dB Maxi
VOLTAGE RATING	330 Vrms Max
DIELECTRIC WITHSTANDING VOLTAGE	1500 Vrms min
INSULATION RESISTANCE	10000 MΩ min
HERMETIC SEAL	- cc/s - Atm.cm3/s
LEAKAGE (pressurized only)	- psi - MPa
WEIGHT	0 Oz - g

STANDARDISATION

CABLE RETENTION	17.96	lb min
	80	N
CENTER CONTACT RETENTION		
Axial force - mating end	6.74	1L .i.
	30	N
Axial force - opposite end	7.74	1b min
	30	N
Torque (Min)	0	Inch.oz
	NA	cm.N
RECOMMENDED TORQUES		
Mating	0	Inch.lb
	-	cm.N
Panel nut	7.08	Inch.lb
	80	cm.N
Clamp nut	0	Inch.lb
	-	cm.N

CONSTRUCTION

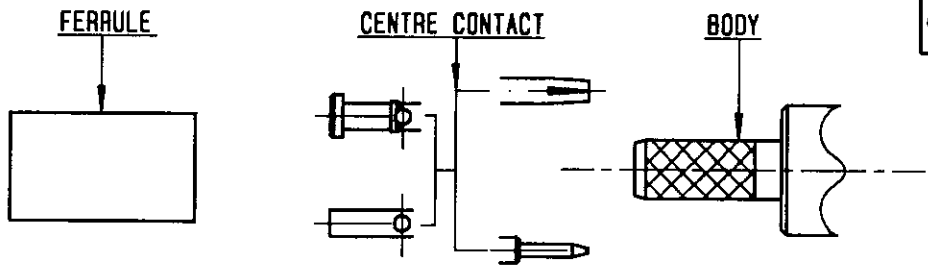
CONNECTOR PARTS	MATERIALS	FINISH
BODY	BRASS	SELECTIVE GOLD OVER NICKEL
OUTER CONTACT	-	-
CENTER CONTACT	BERYLLIUM COPPER	GOLD
INSULATOR	PTFE	-
-	-	-
-	-	-
-	-	-
-	-	-
-	-	-

ISSUE	REVISION No	DESCRIPTION	BY	DATE
-	-	-	-	-
-	-	-	-	-
9646	95-06-013	15.04Inch.lb => 7.04Inch.lb	TRIPPIER	20-11-95

Initiated on 02/05/94  
Approval by BAFFERT JM

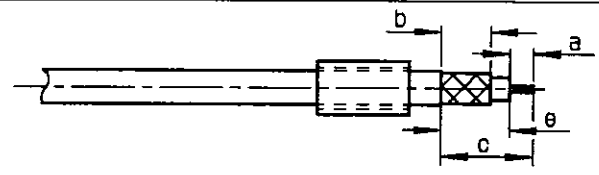
The information given here is subject to change without notice. Design changes may be in order to improve the product.





①

Slide onto the cable the ferrule  
-  
Strip the cable .  
-  
-

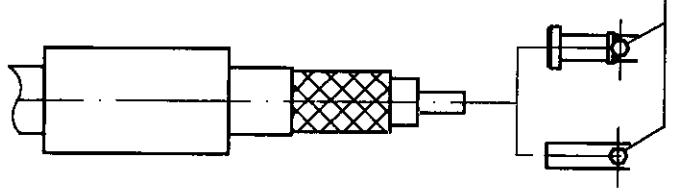


Stripping	a	b	c	d	e
inch	0.157	0.354	0.591	0	0.433
mm	4	9	15	-	11

②

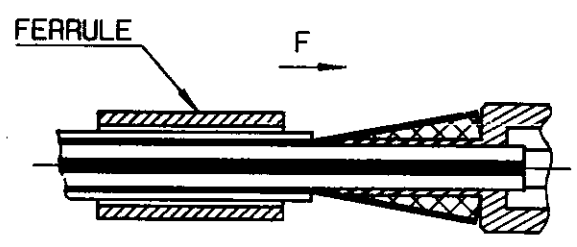
Slide on centre contact until it bottoms against cable dielectrique .  
Solder or crimp centre contact .  
Crimping tool :  
R 282 281 000 (position 5) ou  
M22520/2-01 + Positionner R282 968 000  
-  
-  
-

SOLDER / CRIMPING



③

Fan the braid .  
Slide center contact into the body until bottoms against insulator .  
Slide ferrule over the braid.  
(In direction F)



④

Crimp the ferrule with crimping tool  
R 282 223 000 ( Hex. : 0.213 ) or  
crimping tool M22520/5-01 ( R 282 293 000 )  
+ dies M22520/5-11 ( R 282 235 011 )  
Cut the excess of braid .  
-  
-  
-  
-

